

# Headquarters U.S. Air Force

*Integrity - Service - Excellence*

## Air Force Perspective on Infrastructure



**Brigadier General Tom Lynn**  
Associate Deputy Chief of Staff,  
Logistics, Installations & Mission Support



## Air Force Worldwide



**21st Century Air Force engagement  
requires expeditionary basing**

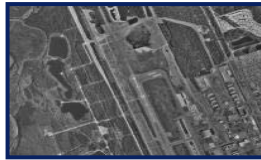
*Integrity - Service - Excellence*



## Physical Plant Profile



166 Installations  
(84 Major Bases)



10M Acres of Land



214M Sq Yds of  
Airfield Pavements



704M Sq Ft  
of Facilities



94,000 Houses



76,000 Dorm Rooms

*Integrity - Service - Excellence*

3



## Physical Plant Funding

FY07 PB Request (\$B)	
Military Construction	\$1.3
Military Family Housing	\$1.9
Maintenance & Repair	\$2.0
BRAC 05	<u>\$0.9</u>
<b>Total</b>	<b>\$6.1</b>

### Highlights:

- \$1.3B in FY07 Military Construction request for 85 projects
- Maintains 89,501 & upgrades 4,499 family housing units Air Force wide
- Recapitalization Rate: 160 years in FY06, 127 years in FY07

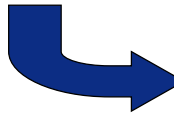
*Integrity - Service - Excellence*



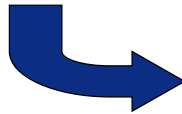
## Air Force Installation Management



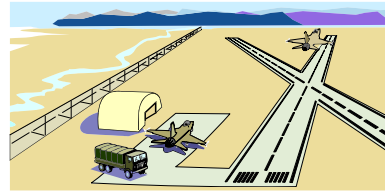
Air Force  
Chief of Staff



Major Commands



Base "X"



*Integrity - Service - Excellence*



## Physical Plant Challenges

- Skyrocketing Costs of Utilities
- Enabling Air Force Transformation
- Providing Quality Housing for Airmen/Families
- Implementing BRAC
- Proactively Supporting the Environment
- Properly Sustaining our Infrastructure
- Properly Recapitalizing our Aging Infrastructure
- Declining Workforce

*Integrity - Service - Excellence*

# **Headquarters U.S. Air Force**

---

*Integrity - Service - Excellence*



**Questions?**

---